

Local climate profile

Waratah-Wynyard Municipality



Past and current climate:

- The Waratah-Wynyard municipality has a gradient of temperatures, from moderate temperatures at the coast (Wynyard average daily maximum temperature is around 22 °C in February, and 12.6 °C in July) up the slope to where there is a greater temperature range and cooler winters (Waratah experiences a daily maximum temperature of around 18 °C in February and 7 °C in July).
- There is also a gradient in average annual rainfall from around 1000 mm per year at the coast to around 2000 mm per year up the slope, and all locations have a distinct seasonal cycle. For example, Wynyard receives an average of 1004 mm per year (44 mm in January, 132 in July), Waratah receives 2180 mm per year (93 mm in February and 254 mm in August) and Corinna receives 1856 mm (86 mm in February and 226 mm in July).
- Rainfall in the municipality comes from the regular westerly frontal rain systems that cross Tasmania, especially in the western and southern parts of the municipality. Rainfall also comes from episodic systems from the north and east, including cutoff lows, especially near the north coast.
- Year-to-year rainfall variability in the western part of the municipality is correlated with the strength of the westerly circulation over the area, and therefore related to drivers such as the Southern Annular Mode (SAM) in most seasons. Rainfall variability in the northern part of the municipality is partly correlated with the El Niño Southern Oscillation in autumn, winter and spring (where El Niño winters are generally drier than average, La Niña winters are generally wetter than average), and also with the Indian Ocean Dipole in winter and spring.
- Average temperatures have risen in the decades since the 1950s, at a rate similar to the rest of Tasmania (up to 0.1 °C per decade). Daily minimum temperatures have risen slightly more than daily maximum temperatures.
- There has been a decline in average rainfall and a lack of very wet years in the Waratah-Wynyard municipality since the mid 1970s, and this decline has been strongest in autumn. This decline was exacerbated by the 'big dry' drought of 1995-2009. The recent two years have seen generally above average rainfalls.

Future scenarios - from the Climate Futures for Tasmania project

Fine-scale model projections of Tasmanian climate were made for two hypothetical but plausible scenarios of human emissions for the 21st Century (taken from the special report on emissions scenarios (SRES) from the Intergovernmental Panel on Climate Change (IPCC)). The scenarios are of ongoing high emissions, A2, and one where emissions plateau and fall, B1. The climate response under the two scenarios is similar through the first half of the century, but the changes under the higher emissions scenario become much stronger than the lower scenario in the later half of the 21st Century.

1. Temperature

- Under the higher emissions scenario (A2), the municipality is projected to experience a rise in average temperatures of 2.6 to 3.3 °C over the entire 21st Century. The rise in daily minimum temperature is expected to be slightly greater than daily maximum temperature, and fairly similar in the different seasons. Under the lower emissions scenario (B1), the change over the entire century is projected to be 1.3 to 2.0 °C. A time series of projected mean Tasmanian mean temperature is shown in Fig 1.
- The projected change in average temperatures is similar to the rest of Tasmania, but less than the global average and significantly less than northern Australia and many regions around the world, especially the large northern hemisphere continents and the Arctic.

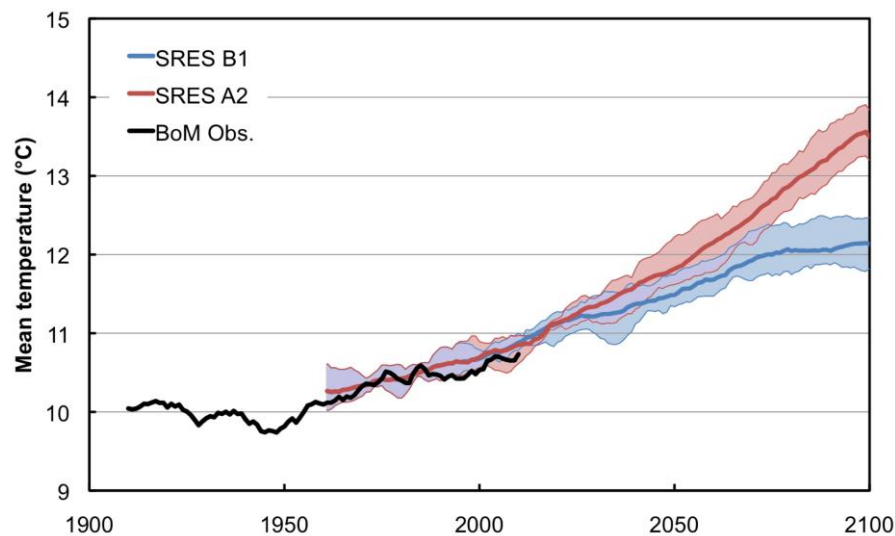


Figure 1. Tasmanian average temperature in observations (black) and model projections for the A2 scenario (red) and the B1 scenario (blue), all series are smoothed (11-year running average), shading shows the range of model projections. Changes under the higher scenario by the very end of the century are discussed in the examples below.

- The projected change in average temperature is accompanied by a change in the frequency, intensity and duration of hot and cold extremes of temperature. For Wynyard under the A2 (higher) scenario by the end of the century the projections indicate:
 - The number of Summer Days (>25 °C) increases from less 10 days per year, to more than 20 days per year.
 - The temperature of very hot days increases more than the change in average temperature (by 3-4 °C in some locations in some seasons).
 - A reduction in frost-risk days from up around 6 per year to around 1 per year, the inland area of the municipality is projected to see a decrease from up to 50 days per year to less than 25 days per year.
 - Warm spells (days in a row where temperatures are in the top 5% of baseline levels) currently last around 7 days, are projected to last up to 14 days longer.

2. Rainfall, runoff and rivers

- The projected pattern of change to rainfall and runoff is similar in nature between the two scenarios, but stronger by the end of the century under the A2 scenario. The model projections indicate that the general long-term influence of climate warming by the end of the century is for a slight increase to annual average rainfall at the coast, but decreased rainfall inland.

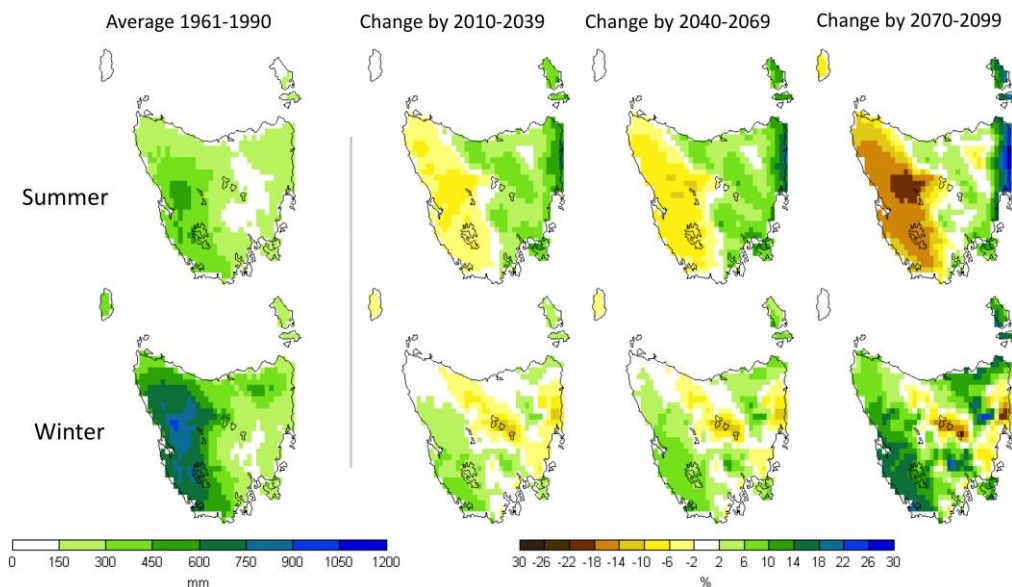


Figure 2. Average rainfall in summer and winter – the left hand side plots show the average rainfall in the baseline period (1961-1990), the plots to the right show the proportional change (%) from that amount in various periods in the 21st century in the average of six climate model projections under the A2 (higher) emissions scenario.

- The central estimate of the projections indicates a slight increase in annual average rainfall under the A2 scenario by the end of the century near the coast (model mean is for less than 5% change), but a decrease inland (also less than 5%).
- Rainfall in the Waratah-Wynyard area is projected to decrease in summer and autumn (by over 10% in the southern areas), but increase in winter and spring (again by over 10% in the southern regions), see Fig. 2 for summer and winter.
- The long-term effect of greenhouse warming is on top of the usual cycles of rainfall, including droughts, termed 'natural variability'. The model projections indicate that the recent dry conditions of the 'big dry' drought is not a new ongoing climate average state. These projections indicate that in the long term, drought frequency and severity may stay similar what was experienced in the twentieth century.
- The projected changes to rainfall are largely driven by changes to the average strength of the westerlies bringing frontal rainfall (an increase in winter and spring, a decrease in summer and autumn).

- A major influence of greenhouse warming on rainfall is the tendency for heavier rainfalls interspersed by longer dry periods, and for greater extremes. However, this varies in different areas. For the Waratah-Wynyard municipality under the A2 (higher) scenario by the end of the century there is projected to be:
 - Up to 15 fewer days with >1 mm rain per year on average, but significantly more rainfall per rain day.
 - Around 2 more very wet days each year (where rainfall exceeds the baseline 95th percentile), and the possibility of 2 more days per year that exceed 20 mm.
 - An increase in the maximum instantaneous rainfall rate of over 20% in some seasons, and an increase of more than 5 mm of rainfall on the wettest day of the year (a 10-15% increase).
 - An increase in the rainfall brought by rare extreme events: a 200-year average recurrence interval (ARI) event for daily rainfall at is projected to increase by more than 30 mm (a 35% increase). More common ARI events (ARI-10, ARI-50) are projected to increase by a similar proportion.
- Pan evaporation is projected to increase, by up to 19% under the A2 scenario by the end of the century, driven by the increases in temperature but also changes to relative humidity, wind speeds, cloudiness and radiation.
- Changes to rainfall and evaporation lead to changes in water runoff and river flows. This in turn has impacts on the inflows into dams and water storages. Under the A2 scenario by the end of the century:
 - There is little change projected for average annual runoff amounts (generally less than 5%), but this is due to a combination of increases in winter and spring of up to 15% together with decreases in summer and autumn of up to 20%.
 - There is projected to be an increase in runoff during high events of up to 20% in the lower altitude sites, with little change in the highlands. Runoff amounts during low events are projected to decline by more than 20% for most of the municipality.
 - Projections of decreased rainfall summer and autumn, together with increased rainfall in winter and spring combine to give little change in average river flows by the end of the century under the higher emissions scenario. For example, the Cam River (central estimate is -4%), the Flowerdale River (-1%), the Arthur, Rapid and Hellyer Rivers (-2%), as well as the Savage and Whyte Rivers (0%). There is a projected change to the seasonality of flows.

3. Agricultural impacts

- As the climate warms, there is a tendency for biological niches to move upward in elevation. This means that there would be increased opportunities for agriculture and increased land-use pressure in the areas up the slope from Wynyard that are currently limited by temperature.
- There is a projected increase in Growing Degree Days (GDD, a measure of the heat to grow and ripen crops). This will affect where crops can be grown, reduce the time to harvest of many crops, and affect many aspects of crop management. At the coast, the annual count of GDD is projected to increase from less than 1200 to around 2000 by the end of the century under the higher emissions scenario, and higher altitude sites are projected to experience similar sized increases. This means that the temperature environment currently present at 300 m would be present at above 700 m at the end of the century under the higher emissions scenario.

- Frost risk days are projected to become much less frequent with a warming climate. Damaging spring frosts may still occur rarely.
- Chilling affects the growth and flowering of berries, fruits and nuts. Accumulated chill hours decrease given the warming under both of the future climate scenarios.
- The reduction in summer and autumn rainfall contribute to a projected increase in the average time spent in meteorological drought measured as the proportion of time where the standardized precipitation index (SPI) is less than minus two. The proportion is projected to increase from about 1.6% to 2.9% under the higher emissions scenario by the end of the century.
- Projections indicate that the growth of grass for dairying will be strongly affected under the higher emissions scenario. Simulations of growing conditions at Flowerdale indicate that the annual cut yield of dryland ryegrass is projected to increase by up to 21% and then plateau, with the majority of the increase in spring growth. The increase is caused mainly by a reduction in temperature limitation and then the plateau is due to water limitation. Projected yields of irrigated ryegrass show a moderate increase to the middle of the century, then a decline due to an increase in days over the upper threshold for growth (28 °C). Switching to other cultivars (such as Kikuyu) may give higher yields, and increasing carbon dioxide concentrations can lead to greater water use efficiency.
- For more information on agricultural impacts, including a detailed case study of changes along the altitudinal gradient from Burnie to Waratah, see Holz et al. (2011).

4. Extreme sea level events

High water events causing coastal inundation comes from a combination of sea level, tide, storm surge and wind waves. Sea level has been rising at a rate of 3.3 ± 0.4 mm/year in the recent period, and is expected to continue rising with further climate warming. The last IPCC assessment report gave a central estimate of a rise of 0.82 m global average sea level by 2100 under a high emissions scenario. The sea level rise varies in different locations, and for the coasts of Tasmania the sea level rise for this scenario is close to the global average.

On the north coast of Tasmania, the very high tide heights contribute more to coastal inundation events than the relatively modest storm surge heights – the current 100-year storm tide event at Burnie is around 1.92 m above average sea level. Changes to storm surges by the end of the century will not be as large as sea level rise. Accounting for all effects, the 100-year event in Burnie will be close to 2.5 m by the end of the century. This means that the current 100-year event in Burnie will be exceeded every 10 to 30 years by 2030, and more frequently than once every 4 years in 2090 under the high emissions scenario.

Appendix – details of climate projections

Greenhouse gas emissions have an influence on the Earth's climate system, along with other human activities such as the emission of ozone-depleting substances, emission of aerosol (particles) and changing the land cover (e.g. deforestation). Sophisticated model simulations can be used to project the likely effect of these influences into the future given our current state of knowledge. It is impossible to predict exactly what future human emissions will be, so models are run under a set of plausible hypothetical emissions scenarios. A model simulation shows the likely effect if we follow that scenario, so it is not a single 'prediction' of the future. The simulation can't include the effect of things that are impossible to predict (such as major volcanic eruptions).

The Climate Futures for Tasmania project produced a set of climate projections at the regional scale for Tasmania. Two emissions scenarios were considered – one of ongoing high emissions (SRES A2), and one where emissions plateau and fall (SRES B1). The climate response under the two scenarios is similar through the first half of the century, but the changes under the higher emissions scenario become much stronger than the lower scenario in the latter half of the 21st Century.

Climate warming causes many complex changes to the earth's climate system. These changes include alterations to ocean currents, average atmospheric circulation and ocean-atmosphere cycles such as the El Niño Southern Oscillation. Projected effects that are relevant to Tasmania include a continued extension of the East Australia Current bringing warmer waters off the east and northeast coast of Tasmania, a pole-ward shift of the subtropical ridge of high pressure and shifts in the mid-latitude westerlies (the 'Roaring 40s'), and a change in remote climate drivers such as atmospheric blocking, the El Niño Southern Oscillation and the Southern Annular Mode. The position of Tasmania adjacent to the Southern Ocean means that the effect of climate warming is not as severe as other more continental regions.

The results presented in this report were made using established methods, including:

- Extreme value distribution fitting in a generalized Pareto distribution to calculate the average recurrence intervals (ARIs).
- Hydrology runoff models developed and calibrated for the Tasmanian Sustainable Yields project to estimate the runoff, river flows and inflows to storages.
- Standard agricultural indices such as the Utah model to calculate chill hours and standard

equations and a 10 °C threshold to calculate Growing Degree Days.

All information is drawn from the Climate Futures for Tasmania Technical reports please see these reports for more details, and to cite in other written work.

Reference list

- Bennett JC, Ling FLN, Graham B, Grose MR, Corney SP, White CJ, Holz GK, Post DA, Gaynor SM & Bindoff NL 2010, Climate Futures for Tasmania: water and catchments technical report, Antarctic Climate and Ecosystems Cooperative Research Centre, Hobart, Tasmania
- Corney SP, Katzfey JJ, McGregor JL, Grose MR, Bennett JC, White CJ, Holz GK, Gaynor SM & Bindoff NL 2011, Climate Futures for Tasmania: climate modeling technical report, Antarctic Climate and Ecosystems Cooperative Research Centre, Hobart, Tasmania
- Entura Consulting, 2010, Climate Futures for Tasmania Flood inundation mapping, Entura Consulting Technical report, 23 Dec 2010
- Grose MR, Barnes-Keoghan I, Corney SP, White CJ, Holz GK, Bennett JC, Gaynor SM & Bindoff NL 2010, Climate Futures for Tasmania: general climate impacts technical report, Antarctic Climate and Ecosystems Cooperative Research Centre, Hobart, Tasmania
- Holz GK, Grose MR, Bennett JC, Corney SP, White CJ, Phelan D, Potter K, Kriticos D, Rawnsley R, Parsons D, Lissou S, Gaynor SM & Bindoff NL 2010, Climate Futures for Tasmania: impacts on agriculture technical report, Antarctic Climate and Ecosystems Cooperative Research Centre, Hobart, Tasmania
- McInnes KL, O'Grady JG, Hemer M, Macadam I, Abbs DJ, White CJ, Bennett JC, Corney SP, Holz GK, Grose MR, Gaynor SM & Bindoff NL In Press, Climate Futures for Tasmania: extreme tide and sea level events technical report, Antarctic Climate and Ecosystems Cooperative Research Centre, Hobart, Tasmania
- White CJ, Sanabria LA, Grose MR, Corney SP, Bennett JC, Holz GK, McInnes KL, Cechet RP, Gaynor SM & Bindoff NL 2011, Climate Futures for Tasmania: extreme events technical report, Antarctic Climate and Ecosystems Cooperative Research Centre, Hobart, Tasmania

The material in this report is based on computer modelling projections for climate change scenarios and, as such, there are inherent uncertainties involved. While every effort has been made to ensure the material in this report is accurate, Antarctic Climate & Ecosystems Cooperative Research Centre (ACE) provides no warranty, guarantee or representation that material is accurate, complete, up to date, non-infringing or fit for a particular purpose. The use of the material is entirely at the risk of a user. The user must independently verify the suitability of the material for its own use.

To the maximum extent permitted by law, ACE, its participating organisations and their officers, employees, contractors and agents exclude liability for any loss, damage, costs or expenses whether direct, indirect, consequential including loss of profits, opportunity and third party claims that may be caused through the use of, reliance upon, or interpretation of the material in this report.